

Other Required (General Education/AA Degree) Courses that do not have critical paths

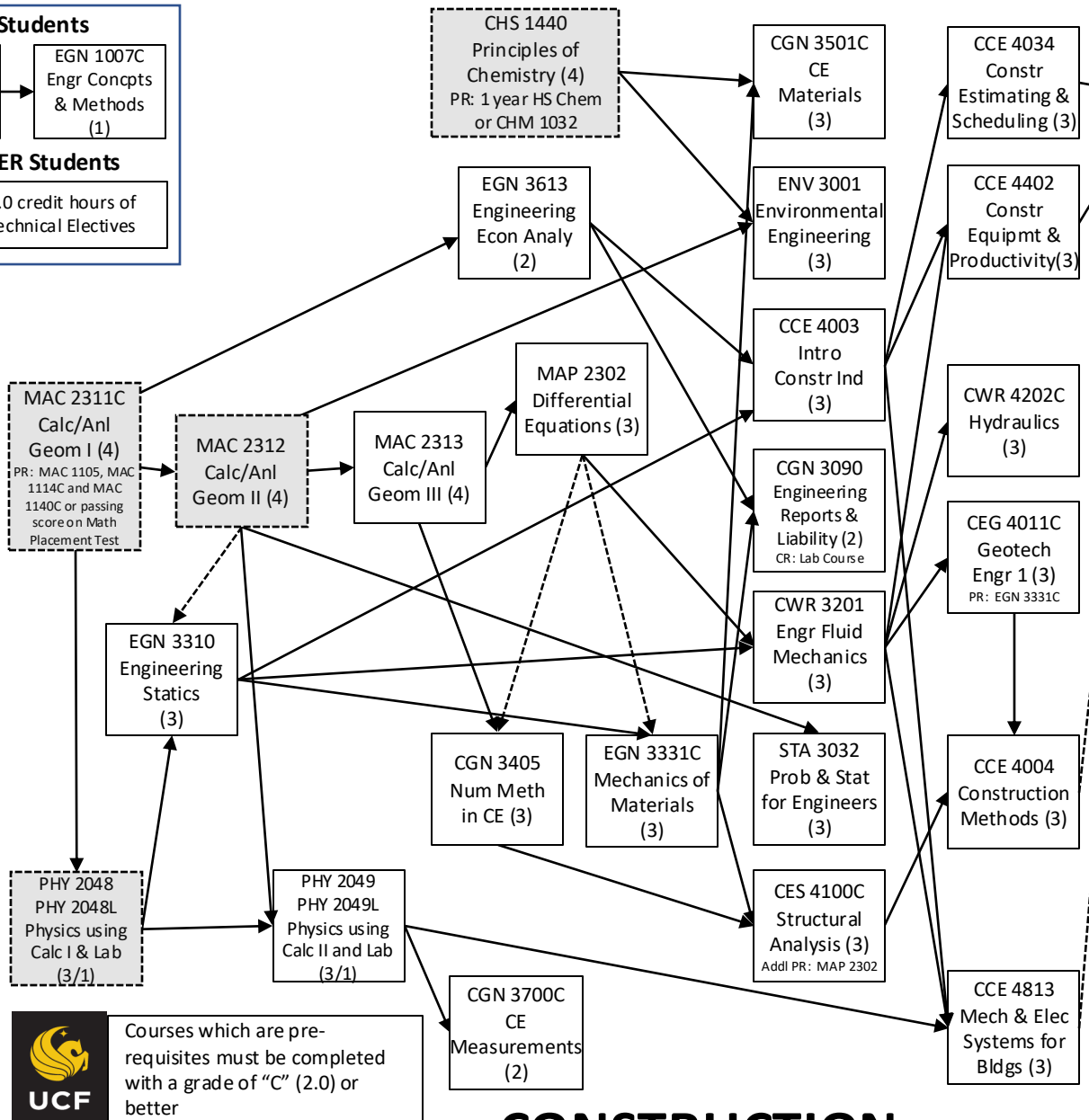
**FTIC Students**

EGS 1006C Intro to Engr Profession (1) → EGN 1007C Engr Concepts & Methods (1)

**TRANSFER Students**

Additional 2.0 credit hours of Restricted Technical Electives

- GEP 1 ENC 1101 (3)
- GEP 2 ENC 1102 (3)
- GEP 3 SPC/COM (3)
- GEP 4 Cultural/Historical I (3)
- GEP 5 Cultural/Historical II (3)
- GEP 6 Cultural/Historical Elective (3)
- GEP 9 ANT/PSY/SYG (3)
- GEP 10 AMH/POS (3)
- GEP 12 Science (3)



**UCF** Courses which are pre-requisites must be completed with a grade of "C" (2.0) or better

**KEY:**

- Prerequisite →
- Corequisite - - - - ->
- Required to clear "Pending" [dashed box]

# CONSTRUCTION ENGINEERING

2024-2025 CATALOG – REQUIRED COURSEWORK

All students must complete the Fundamentals of Engineering Exam. More info [www.ncees.org](http://www.ncees.org)