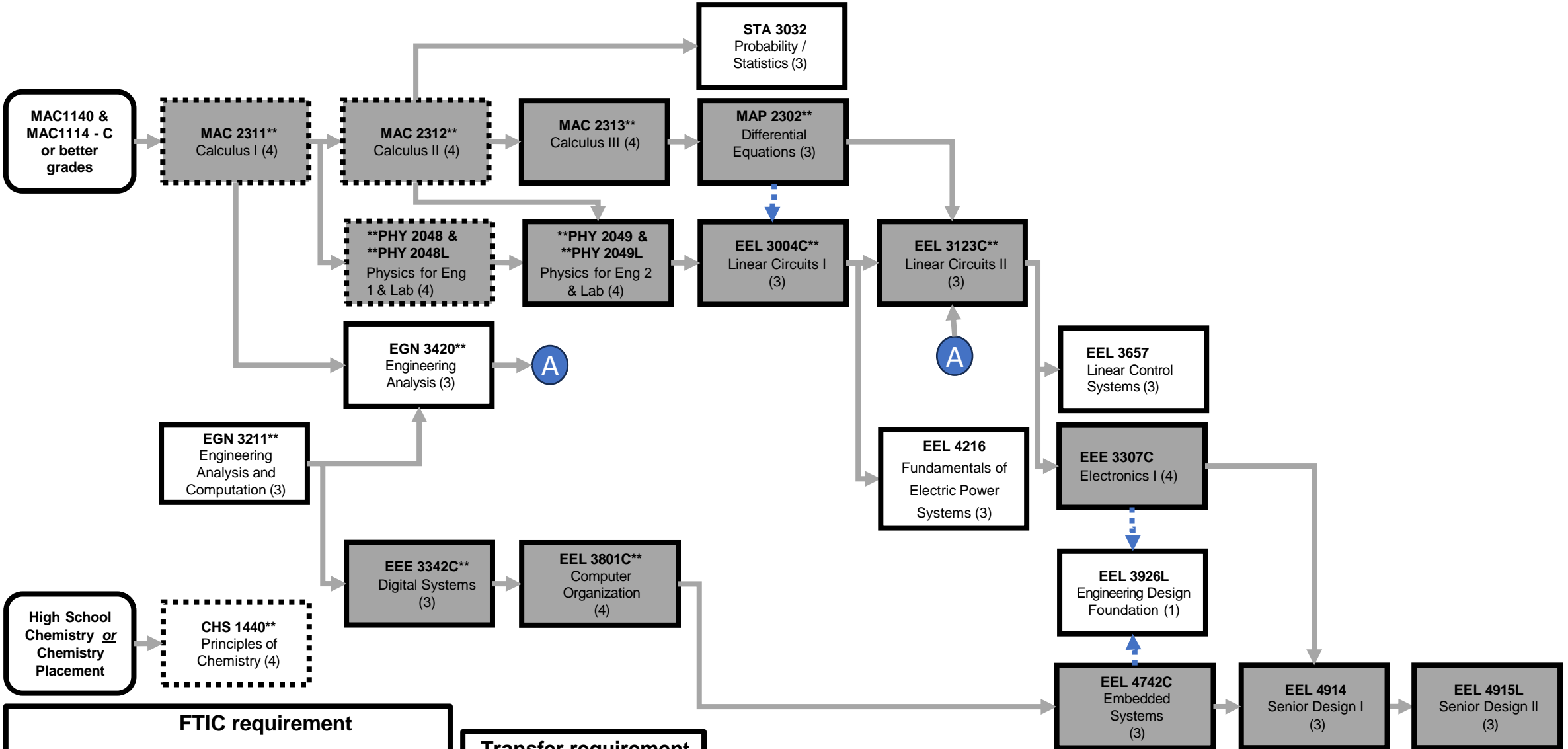


# Electrical Engineering 2024-2025 Power & Renewable Energy Track



**FTIC requirement**

<b>EGS 1006C</b> Intro to Engineering (1)	<b>EGN 1007C</b> Engr. Concepts and Methods (1)	<b>Tech Electives</b> See Advisor (13-15)
--	--	--

**Transfer requirement**

<b>Tech Electives</b> See Advisor (15-17)
--

Select 2 Junior Electives

<b>EEL 3552C</b> Signal Anal & Analog Com (4) PR: EEL 3123C	<b>EEL 3290</b> Global Energy Issues (3) PR: EEL 3004C
<b>EEE 3350</b> Semiconductor Devices (3) PR: EEL 3004C	<b>EEL 3470</b> Electromagnetic Fields (3) PR: EEL 3004C

Select 3 Senior Electives

<b>EEL 4612C</b> Robust Control (4) PR: EEL 3657	<b>EEL 4750</b> DSP Fundamentals (3) PR: EEL 3123C
<b>EEL 4294</b> Introduction to Smart Grids (3) PR: EEL 4216	<b>EEL 4205</b> Electric Machinery (3) PR: EEL 3004C

**KEY**

**PENDING REQUIREMENTS** (dashed border)

**CRITICAL PATH COURSES** (solid grey box)

**PREREQUISITE:** (solid arrow)

**COREQUISITE:** (dotted arrow)

All courses with “\*\*” require a grade of C (2.0) or better.